



# Certificate of Analysis

2016 US-2 | Waterbury, VT 05676  
www.phytoscienceinstitute.com  
(802) 917-8294

Elmore Mountain Therapeutics

Sample: 1812NSL0352.0991

Morrisville, VT 05661  
colin@emtcdb.com  
(802) 999-5984  
Lic. #n/a

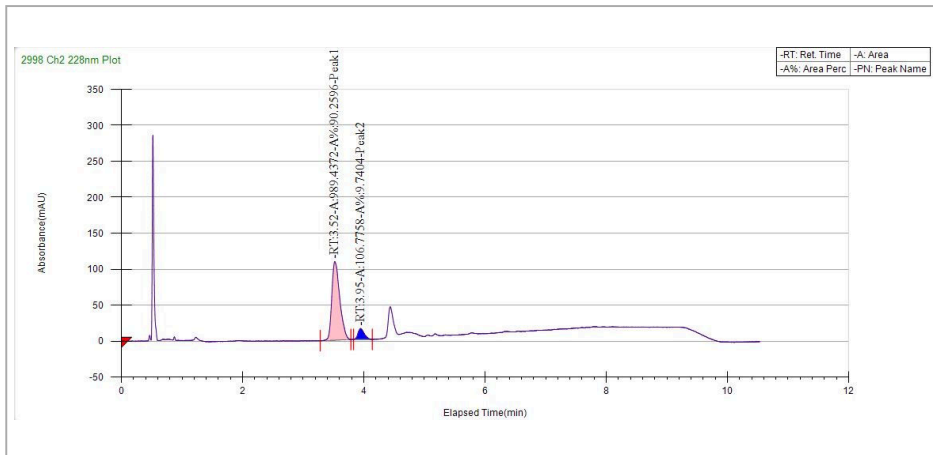
Strain: Hemp  
Batch#: ; Batch Size: - grams  
Sample Received: 12/10/2018; Report Created: 12/10/2018; Expires: 01/09/2019

Sample Name: EMT031  
Ingestible, Tincture, CO2



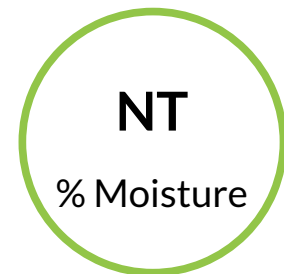
## Potency Test Result

Full spectrum cannabinoid profiling utilizing Supercritical Fluid Chromatography (SFC)



## Cannabinoid Summary

| Cannabinoid Profile                     | %      | mg/g       |
|---|--------|------------|
| Cannabidiol (CBD)                       | 4.789  | 47.89      |
| Tetrahydrocannabinol ( $\Delta^9$ -THC) | 0.293  | 2.93       |
| Cannabinol (CBN)                        | NR     | NR         |
| Cannabidiolic Acid (CBDa)               | NR     | NR         |
| Tetrahydrocannabinolic Acid (THCa)      | NR     | NR         |
| Total THC                               | 0.293% | 2.930 mg/g |
| Total CBD                               | 4.789  | 47.894     |



Total THC = THCa \* 0.877 +  $\Delta^9$ -THC; Total CBD = CBDa \* 0.877 + CBD; Instrument: Supercritical Fluid Chromatography; LOQ = Limit of Quantitation; ND = Not Detected



Dr. Kaley Freeman  
Chief Medical Officer

Confident Cannabis  
All Rights Reserved  
support@confidentcannabis.com  
(866) 506-5866  
www.confidentcannabis.com



Values reported relate only to the product tested. NSL makes no claims as to the efficacy, safety, or other risks associated with any detected or non-detected levels of any compounds reported herein. This Certificate shall not be reproduced except in full, without written approval of NSL.