



# Certificate of Analysis

2016 US-2 | Waterbury, VT 05676  
www.phytoscienceinstitute.com  
(802) 917-8294

Elmore Mountain Therapeutics

Sample: 1905NSL0160.0461

Morrisville, VT 05661  
colin@emtcdbd.com  
(802) 999-5984  
Lic. #n/a

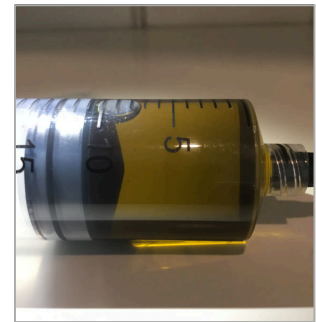
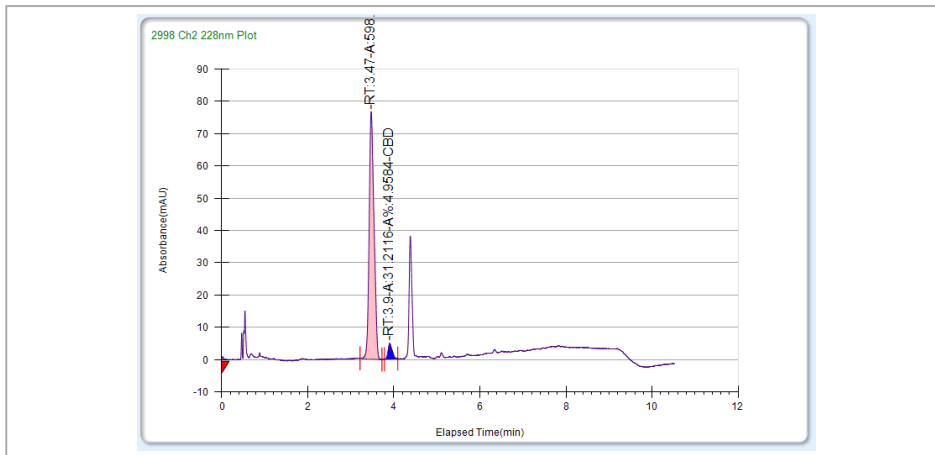
Strain: Hemp  
Batch#: ; Batch Size: g  
Sample Received: 05/06/2019; Report Created: 05/06/2019; Expires: 06/05/2019

Sample Name: EMT039  
Ingestible, Tincture, CO2



## Potency Test Result

Full spectrum cannabinoid profiling utilizing Supercritical Fluid Chromatography (SFC)



## Cannabinoid Summary

| Cannabinoid Profile                     | %             | mg/g              |
|---|---------------|-------------------|
| Cannabidiol (CBD)                       | 5.268         | 52.68             |
| Tetrahydrocannabinol ( $\Delta^9$ -THC) | 0.297         | 2.97              |
| Cannabinol (CBN)                        | NR            | NR                |
| Cannabidiolic Acid (CBDa)               | NR            | NR                |
| Tetrahydrocannabinolic Acid (THCa)      | NR            | NR                |
| <b>Total THC</b>                        | <b>0.297%</b> | <b>2.968 mg/g</b> |
| <b>Total CBD</b>                        | <b>5.268</b>  | <b>52.678</b>     |

**NT**  
% Moisture

Total THC = THCa \* 0.877 +  $\Delta^9$ -THC; Total CBD = CBDa \* 0.877 + CBD; Instrument: Supercritical Fluid Chromatography; LOQ = Limit of Quantitation; ND = Not Detected



Dr. Kaley Freeman  
Chief Medical Officer

Confident Cannabis  
All Rights Reserved  
support@confidentcannabis.com  
(866) 506-5866  
www.confidentcannabis.com



Values reported relate only to the product tested. NSL makes no claims as to the efficacy, safety, or other risks associated with any detected or non-detected levels of any compounds reported herein. This Certificate shall not be reproduced except in full, without written approval of NSL.